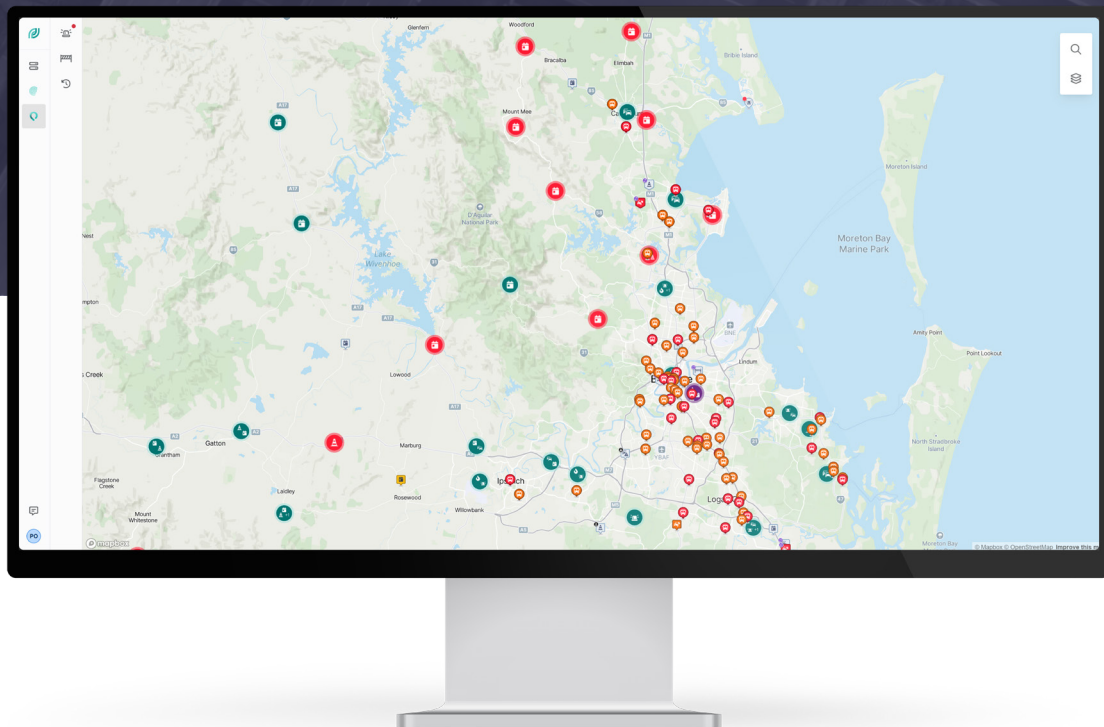


STREAMS[®]

Common Operational View

Smart Transport Technology for complete situational awareness and a safer road network.



STREAMS Common Operational View (COV) is an intelligent, real-time, multi-modal situational awareness tool designed to empower road and public transport agencies with comprehensive situational awareness and network intelligence.

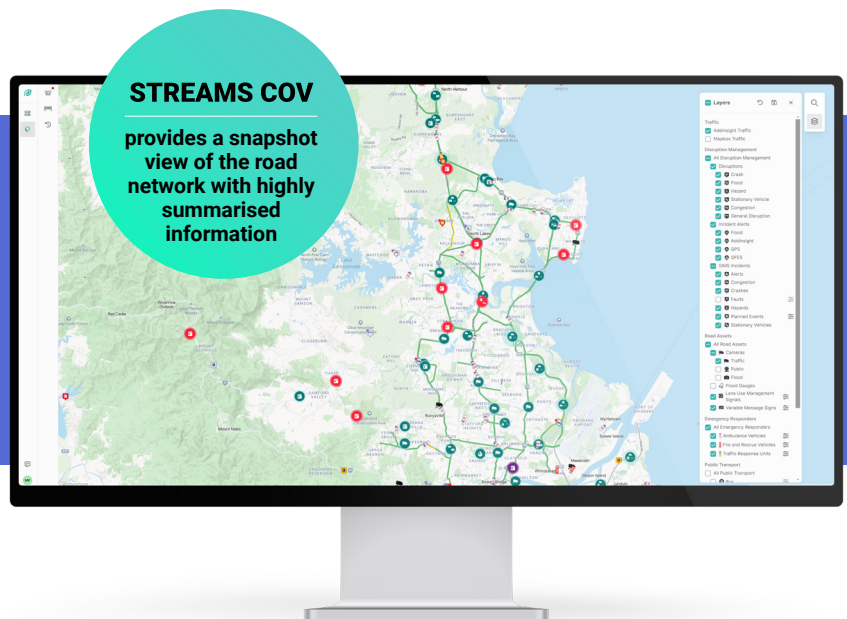
A dynamic solution, STREAMS COV seamlessly integrates real-time data and user-friendly visualisations, equipping transport agencies and operators with the insights necessary to make informed decisions.

By offering a holistic network view, STREAMS COV enables transport agencies to optimise operations, enhance road safety, and improve overall network efficiency.

By centralising data feeds into a single intuitive view, STREAMS COV provides actionable real-time insights supporting your team to deliver exceptional outcomes. These outcomes are delivered through a secure and highly intuitive cloud-native solution to meet your organisation's requirements for today and the future.

STREAMS COV is a feature of the STREAMS Next-Gen ITS Platform and part of the STREAMS suite of products that helps customers optimise road networks and support safer and more efficient journeys.

- + Holistic transport network situational awareness
- + Traffic performance and public transport data
- + High level view of incidents or points of interest



Benefits

- + **Data Feed Automation**
Enables real-time monitoring capabilities
- + **Intuitive Situational Awareness**
Empowers fast, informed decision making
- + **Real-time actionable insights**
Holistic and real-time view of the road and transport network
- + **Future Ready**
Designed with adaptability and scalability in mind
- + **Increased Network Intelligence**
Public Transport details, congestion, potential incidents

Features and Benefits

STREAMS Common Operational View provides TMC operators with the following features:



Protect sensitive data by role-based user and access management

Enhanced security with role-based access

Each team member has the right level of access with role-based permissions, improving security and operational efficiency.

Effortless Single Sign-On integration

Simplify user login with seamless integration into existing identity systems, reducing IT workload and enhancing security.

Detailed activity logs for compliance

Maintain comprehensive logs of user activities to easily monitor access, enhance security oversight, and ensure compliance.



Detailed interactive base map

Interactive, dynamic and customisable maps

Access high-resolution maps with customisable layers for zoning, lanes, lane direction, motorways, intersections and points of interest, providing a clear, tailored situational view of the transport network.

Real-time geospatial data integration

Enrich your maps with real-time data from external or bespoke sources, offering a comprehensive operational picture.

Enhanced map data visualisation

Be informed of network priorities at a glance.



Public transportation monitoring

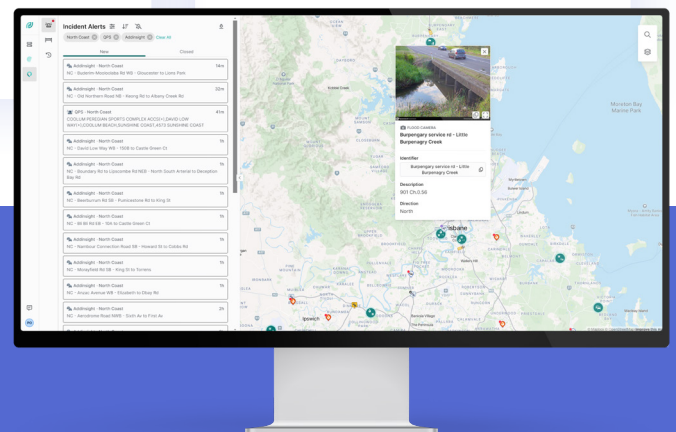
Real-time public transport tracking

See live locations and statuses of buses, trains, trams and ferries, enhancing operational visibility and passenger information.

Advanced schedule monitoring

Track adherence to schedules with real-time alerts for delays, schedules and next-stop information as well as route monitoring, improving service reliability.

Make faster and smarter decisions, sooner.



Features and Benefits

STREAMS Common Operational View provides TMC operators with the following features:



Comprehensive device monitoring

Wide-ranging IoT device integration

Connect various IoT devices like cameras (traffic, flood, public webcams), flood sensors, Variable Message Signs (VMS) and Variable Speed Limit Signs (VSLs) for a complete operational view.

Enhance incident verification

Use road assets to verify reported or autodetected road incidents.



Incident alerts and notifications

Multi-channel alerts

Receive real-time incident alerts through email and secure Application Interfaces (API) to ensure timely responses.

Customisable alert preferences

Set your alert criteria and notification preferences to get relevant updates tailored to your operational needs.



Real-time traffic monitoring

Interactive live traffic visualisation

Quickly spot congestion and traffic speed changes with dynamic, colour-coded traffic flow indicators.



Emergency responder vehicle tracking

High-precision real-time tracking

Monitor emergency responder vehicles with high-precision GPS tracking for optimal coordination and faster response times.

Contact us

Please email our product team to find out more about STREAMS Common Operational View.

 07 3355 8700

 info@transmax.com.au

 www.transmax.com.au

About Transmax

Transmax is a government-owned transport solutions provider of the ITS platform STREAMS[®]. The company exists to improve people's quality of life and helps move millions of commuters around Australian road networks every day.

The company partners with customers to deliver creative solutions that optimise transport networks and support safer and more reliable road journeys.

Transmax provides STREAMS to more than 13 traffic management centres across Australia and manages over 104,000 devices in Australia.